

# Biodegradable grease for total loss applications

## LGTE 2

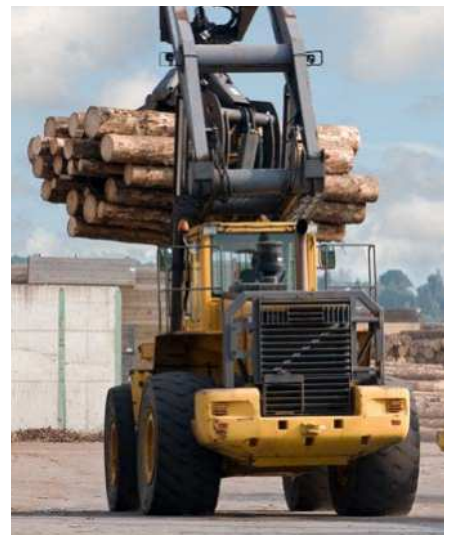
LGTE 2 is grease for total loss applications based on biodegradable esters and anhydrous calcium thickener. The grease is environmentally acceptable and certified with Ecolabel, making it the ideal grease for marine applications such as wire ropes.



- Biodegradable and categorized as “Total loss lubricant (TLL)” as defined by Ecolabel
- Environmentally acceptable lubricant according to “2013 Vessel General Permit”
- Excellent pumpability at low to medium temperatures
- Excellent adhesion to surfaces
- Excellent water resistance
- High load capacity

### Typical applications

- Wire ropes
- Marine
- Construction equipment
- Forestry and agricultural equipment
- Heavy duty off-road application
- Plain bearings and bushings



**Available pack sizes**

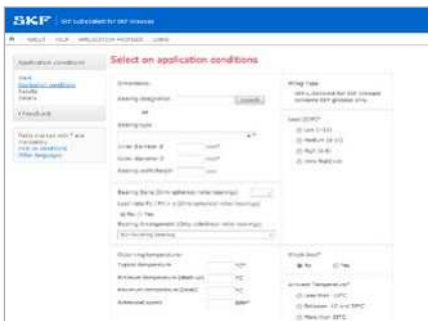
Packsize	Designation
18 kg pail	LGTE 2/18



## Technical data

Designation	LGTE 2/(pack size)		
DIN 51825 code	KPE2G-40	<b>Corrosion protection</b>	
NLGI consistency class	2	Emcor: – standard ISO 11007	0–0
Thickener	Anhydrous calcium	– water washout test	0–1
Colour	Yellow	– salt water test (0.5% NaCl)	<2–2
Base oil type	Ester	<b>Copper corrosion</b>	
Operating temperature range	–40 to +100 °C (–40 to +212 °F)	DIN 51 811, 100 °C	2 max.
Dropping point DIN ISO 2176	>140 °C (>84 °F)	<b>Water resistance</b>	
Base oil viscosity		DIN 51 807/1, 3 hrs at 90 °C	1 max.
40 °C, mm <sup>2</sup> /s	500	Water wash-out test, ISO 11009	<5%
100 °C, mm <sup>2</sup> /s	50	<b>Flow pressure</b>	
<b>Oil separation</b>		DIN 51805-2	<1 400 @ –40 °C
IP 121	1–3	<b>EP performance</b>	
<b>Penetration DIN ISO 2137</b>		Wear scar DIN 51350/5, 1 400 N, mm	2 max.
60 strokes, 10 <sup>-1</sup> mm	265–295	4-ball test, welding load DIN 51350/4, N	3 200 min.
100 000 strokes, 10 <sup>-1</sup> mm	+35 max.	<b>Biodegradability</b>	
		Ecolabel certification	SE/027/008
		Biodegradability OECD 301B	>60%

These characteristics represent typical values.



Advanced tool for grease selection and relubrication calculation

## LubeSelect for SKF greases

Selecting a suitable grease for a particular bearing is a crucial step if the bearing is to meet design expectations in its application. SKF knowledge about bearing lubrication has been encapsulated into a computer program that can be consulted at [skf.com/lubeselect](http://skf.com/lubeselect)

LubeSelect for SKF greases provides you a user friendly tool to select the right grease and suggest frequency and quantity, while taking into account the particular conditions of your application. General guidelines for typical greases for different applications are also available.



Scan or click the QR code, or go to [skf.com/lubeselect](http://skf.com/lubeselect)

[skf.com](http://skf.com) | [skf.com/lubrication](http://skf.com/lubrication) | [skf.com/mapro](http://skf.com/mapro)

© SKF is a registered trademark of the SKF Group.

© SKF Group 2022

The contents of this publication are the copyright of the publisher and may not be reproduced (even extracts) unless prior written permission is granted. Every care has been taken to ensure the accuracy of the information contained in this publication but no liability can be accepted for any loss or damage whether direct, indirect or consequential arising out of the use of the information contained herein.

PUB MP/P8 18909/2 EN · December 2022

Certain image(s) used under license from Shutterstock.com.